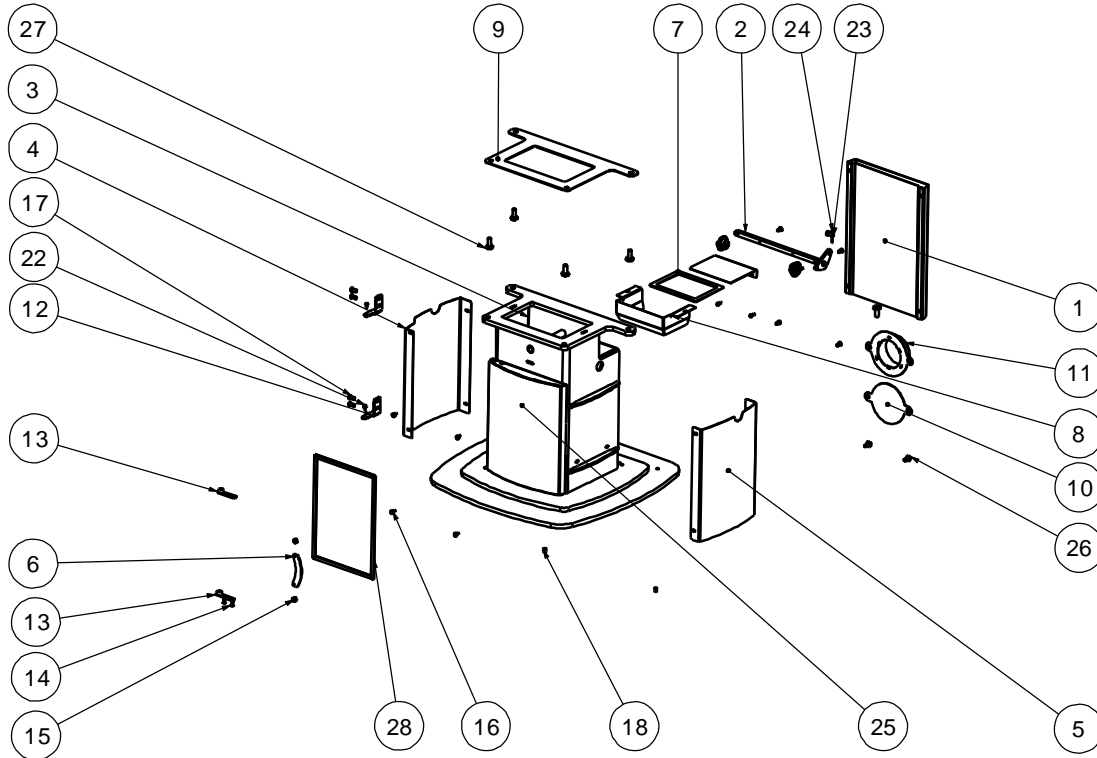




**Issue A**



Item	Part No.	Description	Ex.Vat.	Inc.Vat.	Item	Part No.	Description	Ex.Vat.	Inc.Vat.
1	004/KS037	Rear Air Duct .....	44.00	52.80	15	008/FFM041	Magnet 10x5 .....	2.20	2.64
2	004/KS038	Ash Flap Assy .....	48.50	58.20	16	008/FFS003	M5x10 .....	0.20	0.24
3	010/KS042	Base Assembly .....	120.00	144.00	17	008/FFS076	M6 Button Hd .....	0.30	0.36
4#	004/KS072	LH Column Side .....	36.50	43.80	18	008/FFS068	M8x10 Grub Screw .....	0.91	1.09
5#	004/KS073	RH Column Side .....	36.50	43.80	19*	008/FFN004	M6 Nut .....	0.10	0.12
6	010/KS079	Door Finger Plate .....	13.40	16.08	20*	008/FFW002	Washer 14x6 .....	0.10	0.12
7	008/KS081	Gasket Ash Flap .....	12.10	14.52	21*	008/FFP001	Split Pin .....	0.10	0.12
8	004/KS082	Ash Guide .....	36.50	43.80	22	008/FFR003	Rivet 4.7 Dia Rd Hd .....	0.58	0.70
9	008/KS083	Gasket Column .....	12.10	14.52	23	008/FFP007	Clevis M6 .....	0.60	0.72
10	004/KS091	Blanking Plate .....	8.65	10.38	24	008/FFP009	R Pin .....	0.50	0.60
11	004/KS092	Air Duct Coupling .....	33.00	39.60	25#	004/KS112	Ash Door Assy .....	58.00	69.60
12	010/ES06/27	Hinge Lower .....	13.60	16.32	26	008/FFS027	Bolt M6 x 12 .....	0.30	0.36
13	010/KS111	Ash Door Hinge .....	6.25	7.50	27	008/FFS059	Bolt M8 x 20 .....	0.30	0.36
14	008/FFR007	Pop Rivet 3.2 x 6 .....	0.20	0.24	28	008/ES06/23	Seal (Ash Door) .....	4.25	5.10

\* These items are not shown on the drawing

# Please specify colour when ordering Prices are shown in pounds sterling with vat at 20% They are correct at the date shown but may be subject to change without notice. E. & O.E These prices are subject to a carriage charge.

To obtain spare parts please contact your local stockist giving Model, Part No. and Description. In case of difficulty contact the manufacturer at the address shown. This drawing is for identification purposes only.

