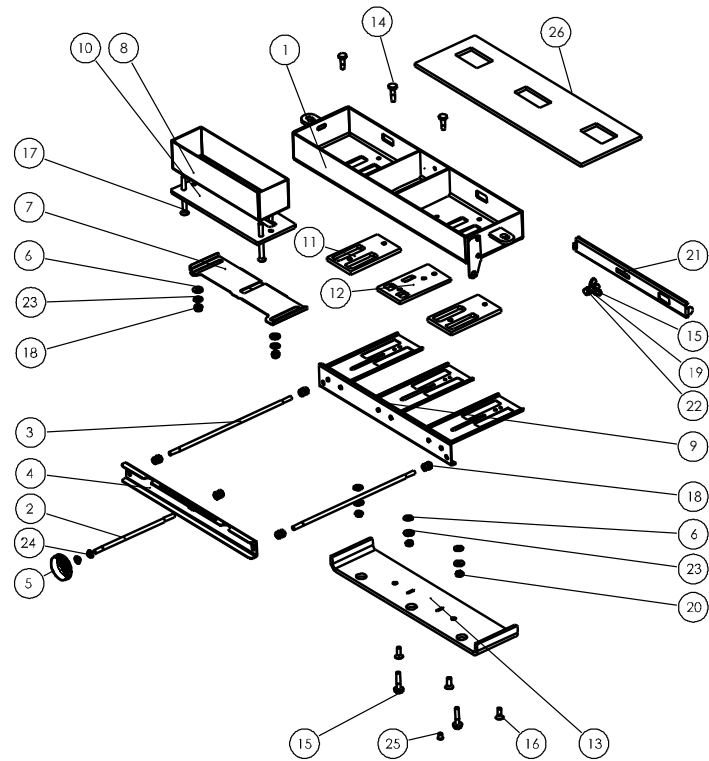




Issue D



| Item | Part No. | Description | Ex.Vat. | Inc.Vat. | Item | Part No. | Description | Ex.Vat. | Inc.Vat. |
|------|-------------|-------------------------|---------|----------|------|-------------|--------------------------|---------|----------|
| 1 | 010/ES15/05 | Mounting Box | 32.50 | 39.00 | 14 | 008/FFS062 | M6 x 25 Hex Hd | 0.10 | 0.12 |
| 2 | 004/ES15/02 | Connecting Rod | 15.20 | 18.24 | 15 | 008/FFS061 | M6 x 30 Hex Hd | 0.10 | 0.12 |
| 3 | 004/ES15/03 | Air Flow Link Rod | 18.40 | 22.08 | 16 | 008/FFS077 | M6x10 CSK Screw | 0.10 | 0.12 |
| 4 | 004/ES15/04 | Front Connector | 21.50 | 25.80 | 17 | 008/FFS070 | M6x65 CSK Screw | 0.25 | 0.30 |
| 5 | 008/ES15/11 | Air Control Knob | 10.60 | 12.72 | 18 | 008/FFN004 | M6 Nut | 0.10 | 0.12 |
| 6 | 008/ES15/16 | PTFE Washer | 1.94 | 2.33 | 19 | 008/FFN007 | M6 Wing Nut | 0.30 | 0.36 |
| 7 | 004/ES15/21 | Slide Front | 21.50 | 25.80 | 20 | 008/FFN014 | M6 Nyloc Nut | 0.30 | 0.36 |
| 8 | 004/ES15/22 | Front Air Box | 36.50 | 43.80 | 21 | 004/CY21 | Air Bypass Slider | 21.50 | 25.80 |
| 9 | 004/ES15/24 | Air Slide | 18.40 | 22.08 | 22 | 008/FFM022 | M6 Grip Washer | 0.30 | 0.36 |
| 10 | 008/ES15/26 | PTFE Slide Strip | 18.40 | 22.08 | 23 | 008/FFW002 | M6 Plain Washer | 0.10 | 0.12 |
| 11 | 008/ES15/27 | PTFE Slider | 18.40 | 22.08 | 24 | 008/FFM040 | Bearing | 1.94 | 2.33 |
| 12 | 008/ES15/29 | PTFE Slider | 18.40 | 22.08 | 25 | 008/ES36/01 | Brass Ball Catch | 4.55 | 5.46 |
| 13 | 010/ES15/18 | Airbox Guard | 15.20 | 18.24 | 26 | 008/ES15/12 | Rear Airbox Gasket | 29.00 | 34.80 |

Please specify colour when ordering Prices are shown in pounds sterling with vat at 20% They are correct at the date shown but may be subject to change without notice. E. & O.E These prices are subject to a carriage charge.

To obtain spare parts please contact your local stockist giving Model, Part No. and Description. In case of difficulty contact the manufacturer at the address shown. This drawing is for identification purposes only.

