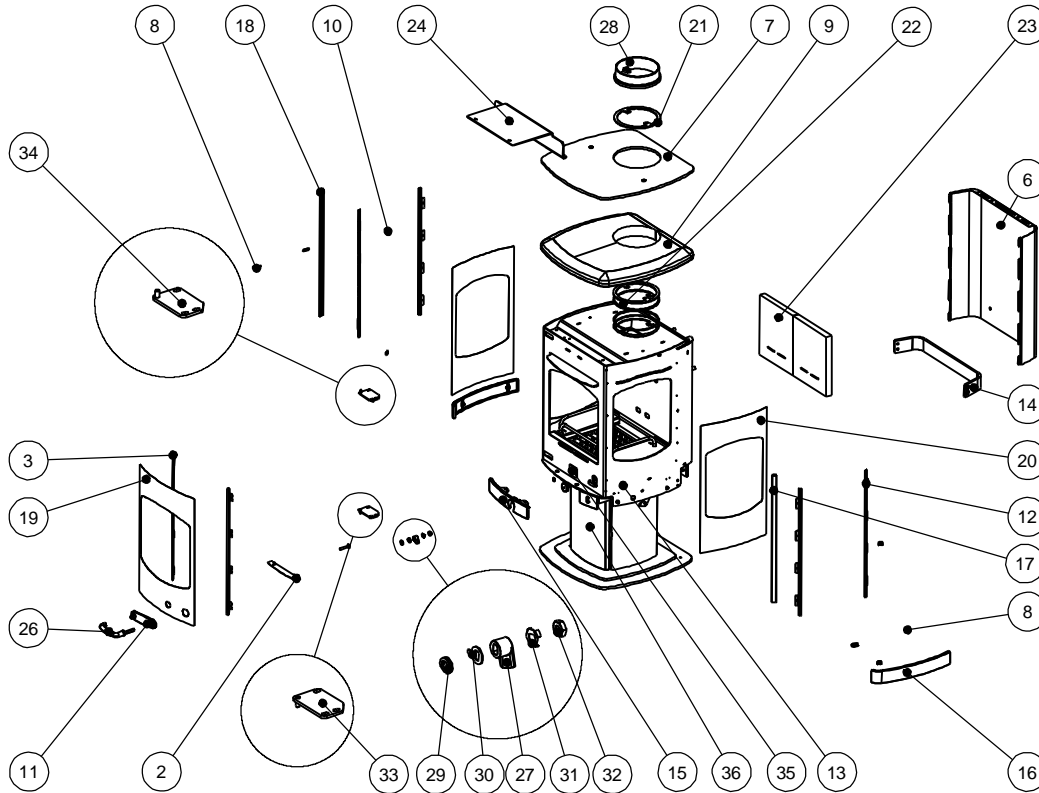




Issue H



Item	Part No.	Description	Ex.Vat.	Inc.Vat.	Item	Part No.	Description	Ex.Vat.	Inc.Vat.
1#	002/ES01/A	Door Assembly	640.00	768.00	20	006/ES18/01	Glass Side	325.00	390.00
2	004/ES01/04	Glass Support	2.95	3.54	21	010/ES27/01	Spacer Ring	19.20	23.04
3#	004/ES01/07	Glass Retainer Front	21.50	25.80	22	010/ES27	Extension Ring	59.50	71.40
4	010/ES01/16	Hinge Assembly (Lower)	19.20	23.04	23	011/ES28/01	Firebrick	42.00	50.40
5	010/ES01/15	Hinge Assembly (Top)	19.20	23.04	24	010/ES31	Baffle	57.00	68.40
6#	004/ES04	Rear Cover	106.00	127.20	25*	008/ES35/02	Door Seal Kit	30.00	36.00
7#	010/ES04/03	Stove Top (Steel)	96.00	115.20	26	008/KV16	Handle	22.00	26.40
8	004/ES04/04	Glass Holding Bracket	2.95	3.54	27	002/AY14	Catch	10.30	12.36
9	008/ES04/05	Soapstone Top	345.00	414.00	28	002/CY45	Flue Collar	77.00	92.40
10	004/ES04/06	Trim Mount	1.34	1.61	29	008/FFW015	M12 Double Coil Spring Washer	2.20	2.64
11	002/ES04/08	Escutcheon Plate	36.50	43.80	30	004/ES01/12	Handle Stop	2.20	2.64
12#	004/ES04/09	Glass Retainer Side	21.50	25.80	31	004/ST008	Tabbed Locking Washer	1.46	1.75
13#	001/ES10	Firebox			32	008/FFN001	M12 Half Nut	0.21	0.25
14	010/ES10/15	Rear Collar	28.50	34.20	33	010/ES01/10/00	Lower Hinge Bracket	18.40	22.08
15#	002/ES10/04	Front Casting	106.00	127.20	34	010/ES01/10/01	Upper Hinge Bracket	18.40	22.08
16#	002/ES10/05	Side Casting	116.00	139.20	35	012/ES11	Serial No. Label		
17#	004/ES10/16	R.H. Corner Upright	24.00	28.80	36	004/ES17	Ash Bin	108.00	129.60
18#	004/ES10/17	L.H. Corner Upright	24.00	28.80	37*	008/ES137	Glass Seal Kit	13.70	16.44
19	006/ES18/02	Glass Front	355.00	426.00					

* These items are not shown on the drawing.

Please specify colour when ordering Prices are shown in pounds sterling with vat at 20% They are correct at the date shown but may be subject to change without notice. E. & O.E These prices are subject to a carriage charge.

To obtain spare parts please contact your local stockist giving Model, Part No. and Description. In case of difficulty contact the manufacturer at the address shown. This drawing is for identification purposes only.

