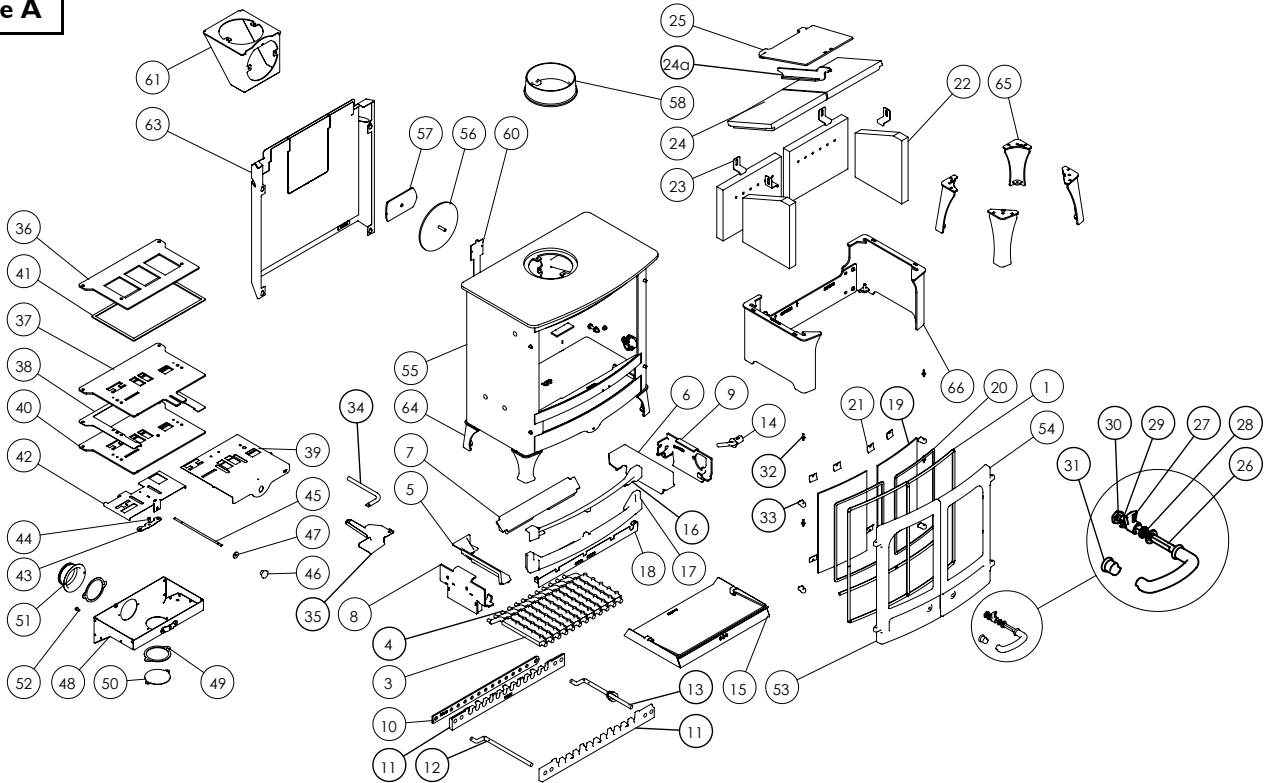




Issue A



Item	Part No.	Description	Ex.Vat.	Inc.Vat.	Item	Part No.	Description	Ex.Vat.	Inc.Vat.
1	008/BP035	Door Seal Set Inc. Adhesive	30.00	36.00	34	004/EZ095	Riddling/Ashpan Tool	24.00	28.80
2*	008/FW29	Door Seal Adhesive	11.20	13.44	35	004/AP051	Tool Holder	11.20	13.44
3	002/CG20	Grate Bar	16.90	20.28	36	008/BP110	Air Control Gasket	10.50	12.60
4	002/CG20S12	Set of Grate Bars (12)	164.00	196.80	37	010/BP111	Air Control Top Slider Plate	27.00	32.40
5	002/BU015L	LH Side Fire Plate	41.50	49.80	38	004/BP112	Wood/Multifuel Surround Plate	19.80	23.76
6	002/BU015R	RH Side Fire Plate	41.50	49.80	39	004/BP113	Wood/Multifuel Selection Slide	29.50	35.40
7	002/BP016	Back Fire Plate	29.50	35.40	40	010/BP114	Air Control Lower Plate	27.00	32.40
8	010/BP039	LH Carrier Bar Support	30.50	36.60	41	008/KZ006	Air Box Gasket	11.80	14.16
9	010/AP040	RH Carrier Bar Support	31.50	37.80	42	004/BP115	Air Control Slider	24.50	29.40
10	010/BP033	Mover Bar	24.00	28.80	43	004/BR015	Clicker Retainer Plate	3.55	4.26
11	002/BY30	Carrier Bar	56.50	67.80	44	008/ES36/01	Brass Ball Catch	4.55	5.46
12	012/FW14	Idler Rod	36.00	43.20	45	004/EZ016	Control Rod	13.40	16.08
13	010/BU077	Riddler Rod Assembly	36.00	43.20	46	008/AY37	Air Control Knob	4.85	5.82
14	002/AP098	Riddler Spigot	28.50	34.20	47	008/BR052	Felt Washer	1.14	1.37
15	004/BP017	Ashpan	29.50	35.40	48	004/KZ039	Air Box Cover	33.00	39.60
16	002/BP008	Deepening Bar	31.50	37.80	49	008/CR063	Duct Gasket	4.85	5.82
17	002/BP007	Front Fence (Lower)	36.00	43.20	50	004/CR064	Blanking Plate	9.85	11.82
18	004/BP052	Front Ash Shedding Plate	17.10	20.52	51	004/CR048	Air Inlet Spigot	NA	
19	006/BP018	Glass	69.00	82.80	52	008/FFS062	Defra Stop		
20	008/BP045	Glass Seal	10.80	12.96	53#	003/BP001A	LH Door Assembly	172.00	206.40
21	004/KV23	Glass Retainer	0.70	0.84	54#	003/BP002A	RH Door Assembly	194.00	232.80
22	011/BP029S	Set of Fire Bricks (4)	52.00	62.40	55	001/BP010	Firebox (Island II BP)		
23	004/XV30	Brick Retainer (4)	7.45	8.94	56	012/TW09	Blanking Plate	24.50	29.40
24	011/BP031S	Set of Throatplate Bricks (2)	48.50	58.20	57	010/AY51	Clamping Plate	19.20	23.04
24a	010/BP077	Throat Plate Brick Hanger	12.70	15.24	58#	002/CH12B	Flue Collar	73.00	87.60
25	010/BP032	Upper Throatplate	30.00	36.00	59*	008/NV38	Flue Fixing Rope Seal	7.55	9.06
26	008/KV16	RH Door Handle	22.00	26.40	60	012/BP011	Serial No. Label		
27	002/AY14	Door Catch Cam	10.30	12.36	61#	010/TW33	Vert. Rear Flue Connector (Opt'l Extra)	122.00	146.40
28	008/FFW015	M12 Double Coil Spring Washer	2.20	2.64	62	010/EW51	Ash Carrier (Opt'l Extra)	122.00	146.40
29	004/ST008	Tabbed Locking Washer	1.46	1.75	63#	010/BP080	Heatshield (Opt'l Extra)	86.00	103.20
30	008/FFN001	M12 Half Nut	0.21	0.25	64#	010/BP012S	Set of Low Legs (Option)	47.00	56.40
31	008/KV13	LH Door Knob	3.55	4.26	65#	010/AY85S	Set of High Legs (Option)	87.00	104.40
32	008/ST068/4	Hinge Pin Set (4)	4.25	5.10	66#	010/BP087	Store Stand (Option)	190.00	228.00
33#	002/AP024	Hinge Post	15.60	18.72					

*These items are not shown on the drawing.

Please specify colour when ordering. Prices are shown in pounds sterling with vat at 20% They are correct at the date shown but may be subject to change without notice. E. & O.E These prices are subject to a carriage charge.

To obtain spare parts please contact your local stockist giving Model, Part No. and Description. In case of difficulty contact the manufacturer at the address shown. This drawing is for identification purposes only.

