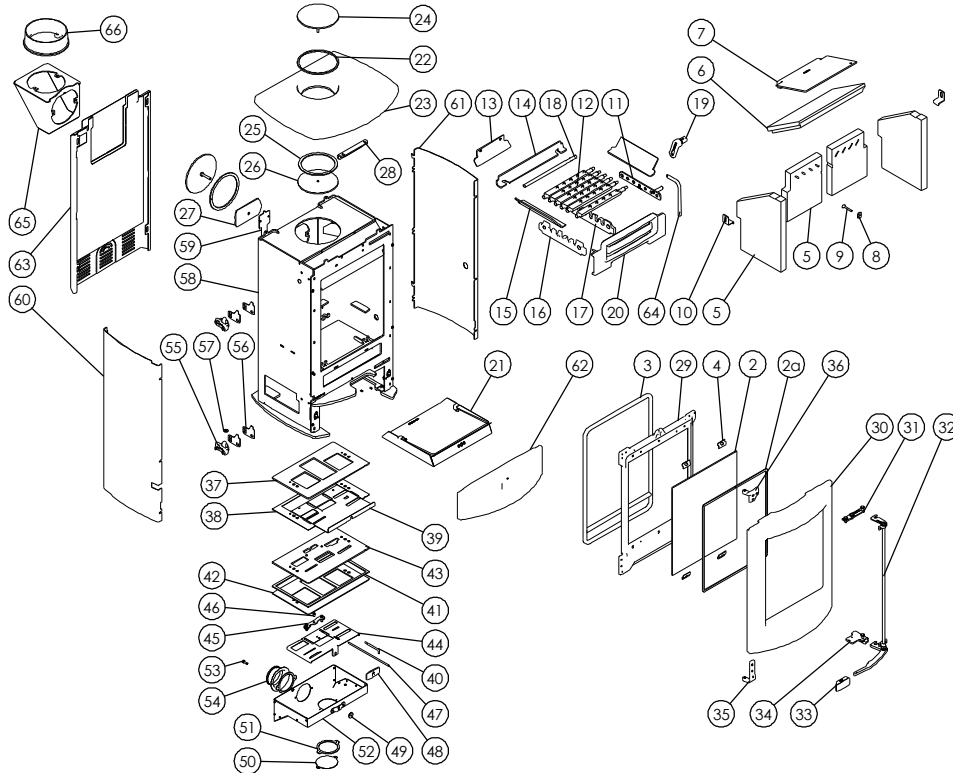




Issue D



Item	Part No.	Description	Ex.Vat.	Inc.Vat.	Item	Part No.	Description	Ex.Vat.	Inc.Vat.
1*	008/FW29	Door Seal Adhesive .....	11.20	13.44	34	010/KZ064	Lower Latch Receiver Plate .....	21.00	25.20
2	006/KZ018	Glass Inc. Seal .....	72.00	86.40	35	002/KZ053	Lower Hinge Bracket .....	27.00	32.40
2a	008/KZ024	Glass Seal .....	7.55	9.06	36	002/KZ054	Upper Hinge Bracket .....	27.00	32.40
3	008/KZ074/S	Door Seal Kit Inc Adhesive .....	30.00	36.00	37	010/KZ044	Air Control Slider Backing Plate .....	15.60	18.72
4	004/EZ023	Glass Retainer .....	7.30	8.76	38	004/KZ043	Wood/Multifuel Surround Plate .....	16.20	19.44
5	011/KZ029S	Fire Brick Set (4) .....	79.00	94.80	39	004/KZ045	Slider Wood/Multifuel .....	27.00	32.40
6	011/KZ031	Brick Throat Plate .....	37.50	45.00	40	004/EZ014	Wood/Multifuel Selection Lever .....	9.70	11.64
7	010/KZ032	Upper Baffle Plate .....	30.50	36.60	41	008/KZ006	Airbox Gasket .....	11.80	14.16
8	010/ER036	Brick Retaining Washer .....	1.94	2.33	42	008/KZ047	Slider Control Gasket .....	7.55	9.06
9	008/FFB125	Coach Bolt M6 x 45 .....	0.73	0.88	43	010/KZ005	Air Control Plate .....	19.40	23.28
10	004/XV30	Brick Bracket .....	7.45	8.94	44	004/KZ020	Air Slide .....	10.60	12.72
11	010/KZ083	Mover Bar .....	24.00	28.80	45	004/BR015	Clicker Retainer Plate .....	3.55	4.26
12	002/CG01S6	Set of Grate Bars (6) .....	82.00	98.40	46	008/ES36/01	Brass Ball Catch .....	4.55	5.46
13	010/EZ013	Undergrate Ash Deflector .....	7.30	8.76	47	004/EZ016	Control Rod .....	13.40	16.08
14	010/KZ080	Rear Fire Plate .....	21.00	25.20	48	008/EZ105	Air Control Handle .....	11.20	13.44
15	010/KZ079	Side Fire Plate .....	19.40	23.28	49	008/BR052	Felt Washer .....	1.14	1.37
16	002/SY30	LH Carrier Bar .....	52.50	63.00	50	004/CR064	Blanking Plate .....	9.85	11.82
17	002/EZ077	RH Carrier Bar .....	39.50	47.40	51	008/CR063	Blanking Plate Gasket .....	4.85	5.82
18	012/FW14	Idler Rod .....	36.00	43.20	52	004/KZ039	Air Box Cover .....	33.00	39.60
19	002/EZ098	Riddler Knob .....	30.00	36.00	53	008/FFS062	Defra Stop .....	0.10	0.12
20	002/KZ007	Front Fence .....	48.00	57.60	54	004/CR048	Air Inlet Spigot .....	NA	
21	004/KZ017	Ashpan .....	27.00	32.40	55	002/KZ065	Door Hinge Bracket .....	31.50	37.80
22#	010/KZ131	Flue Pipe Surround Ring .....	15.60	18.72	56	004/KZ066	Door Hinge Shim .....	4.05	4.86
23#	002/KZ009	Cast Top .....	96.00	115.20	57	008/FFW024	M8 Brass Washer .....	0.66	0.79
24	010/KZ132	Blanking Plate .....	26.00	31.20	58#	001/KZL010	Firebox		
25	008/KS134	Flue Sealing Gasket .....	3.80	4.56	59	012/KZL011	Serial Label		
26	010/KZ133	Blanking Plate retainer .....	15.00	18.00	60#	004/KZL093L	Left Side Panel .....	52.50	63.00
27	010/AY51	Clamping plate .....	19.20	23.04	61#	004/KZL093R	Right Side Panel .....	52.50	63.00
28	010/EZ012	Top Retaining Bracket .....	7.30	8.76	62#	002/KZL090A	Front Casting .....	63.00	75.60
29	002/KZ003	Door Back Plate .....	61.00	73.20	63#	004/KZ103A	Heatshield .....	58.50	70.20
30#	002/KZ001/A	Door Casting .....	450.00	540.00	64	004/EZ095	Riddler/ Ashpan Operation Tool .....	24.00	28.80
31	010/EZ061	Upper Latch Receiver Plate .....	14.60	17.52	65#	010/TW33	Vertical Rear Flue Adapter (Optional Ex	122.00	146.40
32#	010/KZ058	Rod Handle Assembly .....	45.00	54.00	66#	002/CH12B	Flue Collar .....	73.00	87.60
33	008/EZ106	Door Handle .....	14.30	17.16	67	010/EW51	Ash Carrier (Optional Extra) .....	122.00	146.40

These items are not shown on the drawing.

\* Please specify colour when ordering. Prices are shown in pounds sterling with vat at 20% They are correct at the date shown but may be subject to change without notice. E. & O.E These prices are subject to a carriage charge

To obtain spare parts please contact your local stockist giving Model, Part No. and Description. In case of difficulty contact the manufacturer at the address shown. This drawing is for identification purposes only.

